

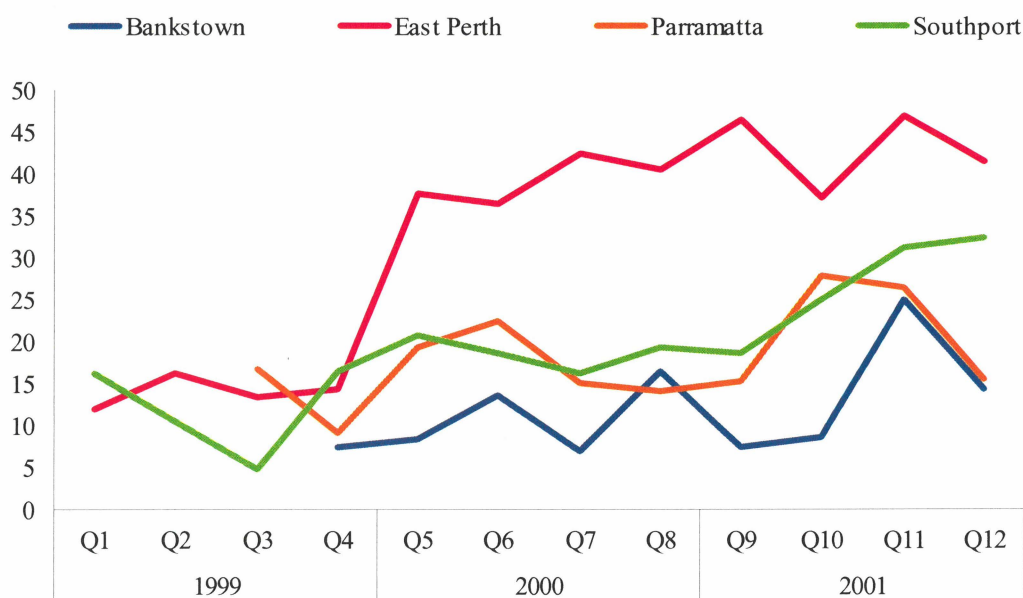


• From the Australian Institute of Criminology •

DUMA shows amphetamine use on increase

Amphetamine use is increasing, according to a report released by the Australian Institute of Criminology that is based on data from interviews of police detainees in four sites within Australia (Bankstown NSW, East Perth WA, Parramatta NSW and Southport Qld). The detainees participated in surveys on their drug use and criminal history as well as being asked to provide a urine sample as part of the Drug Use Monitoring in Australia (DUMA) project. Trend data show that adult male detainees in East Perth have recorded the highest use of amphetamines, with more than 35 per cent testing positive since the beginning of 2000. *Drug Use Monitoring in Australia (DUMA): 2001 Annual Report on Drug Use Among Police Detainees* provides information on illicit drug use and criminal history of police detainees in Bankstown, Parramatta, East Perth and Southport. The project has been expanded in 2002 to include three new sites, two in South Australia (Adelaide City and Elizabeth) and one in Queensland (Brisbane).

**Percentage of adult males, testing positive to amphetamines
by site and quarter, 1999–2001***



*Data collected on a quarterly basis

SOURCE: Makkai, T. & McGregor, K. 2002, *Drug Use Monitoring in Australia: 2001 Annual Report on Drug Use Among Police Detainees*, Research and Public Policy Series, no. 41, Australian Institute of Criminology, Canberra.

Abstract available on AIC web site: <http://www.aic.gov.au/publications/rpp/41/index.html>

Australian Institute of Criminology • GPO Box 2944 Canberra ACT 2601

• Tel: 02 6260 9251 • Fax: 02 6260 9201

• Email comments: Vanessa.Dennison@aic.gov.au

• Visit online: <http://www.aic.gov.au>